

CLASSE 3
63,70m²

CLASSE 4
56,00m²

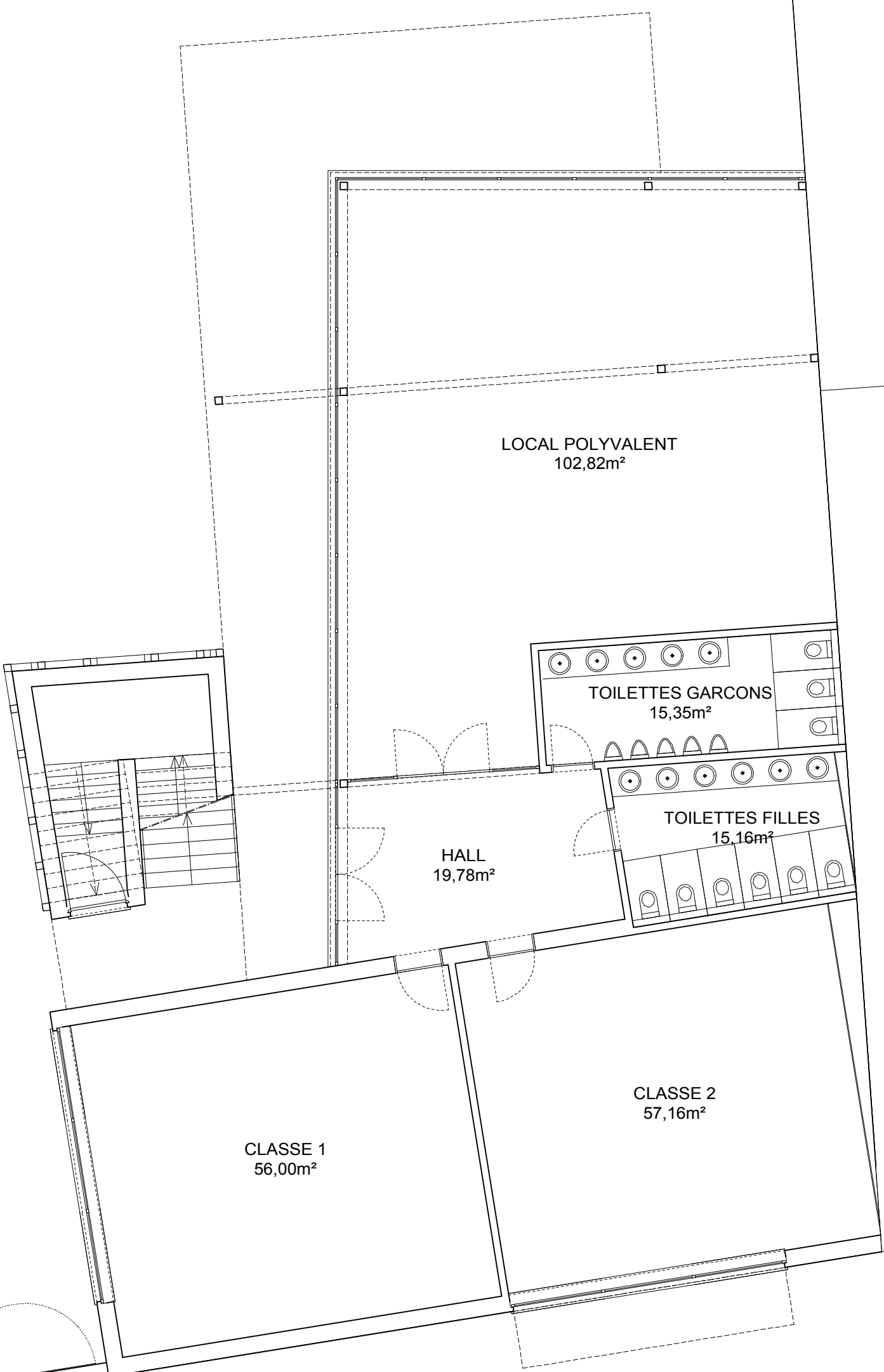
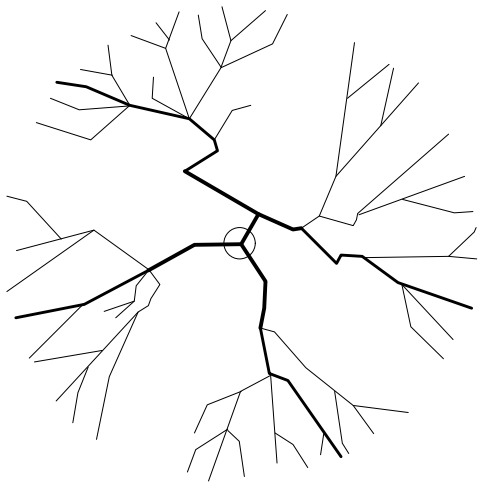
HALL
54,42m²

WC H
2,39m²

WC D
2,40m²

CLASSE 5
56,00m²

CLASSE 6
57,16m²



LOCAL POLYVALENT
102,82m²

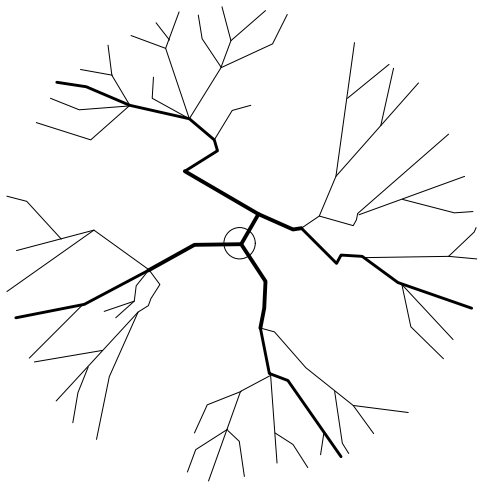
TOILETTES GARCONS
15,35m²

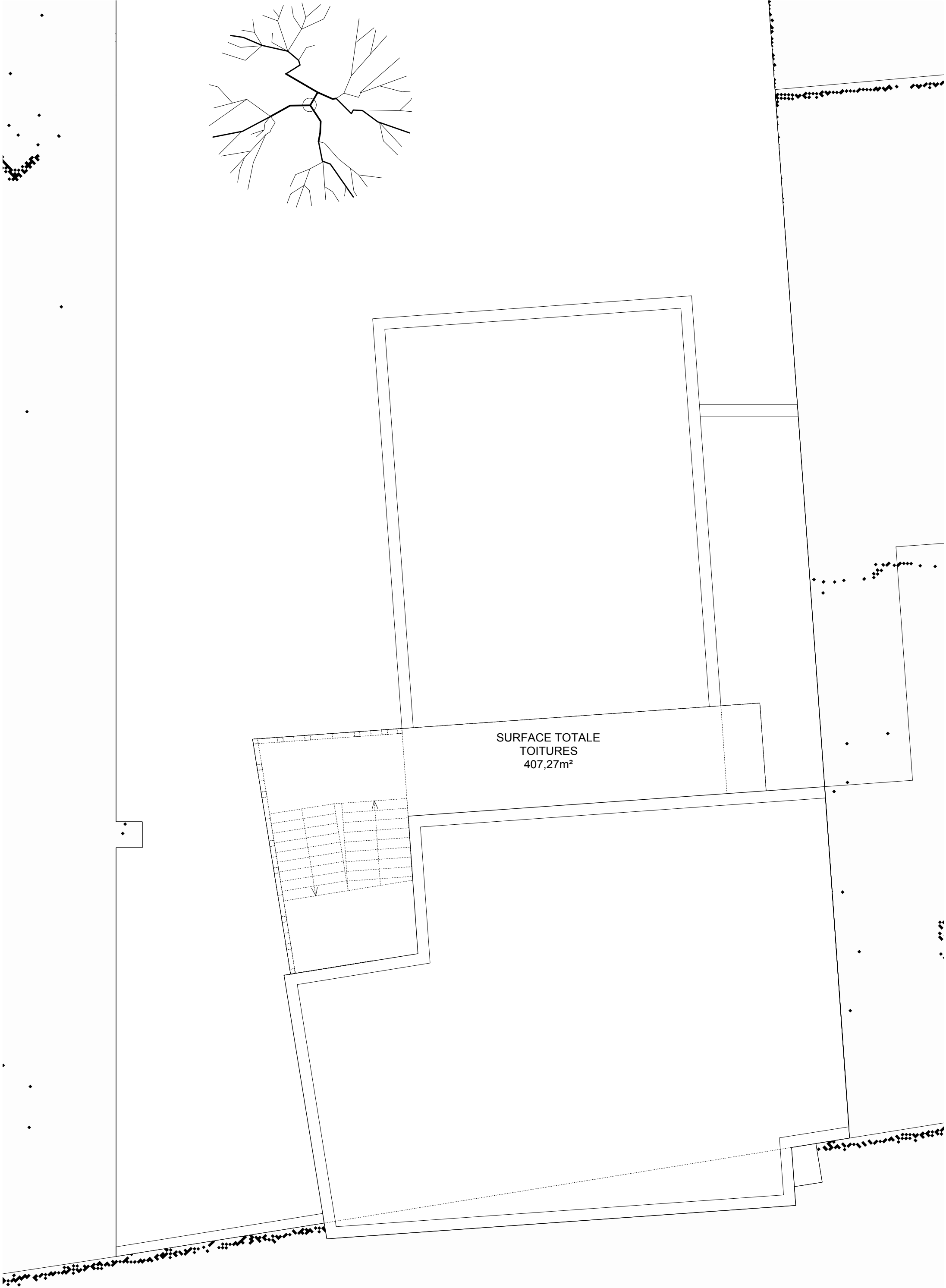
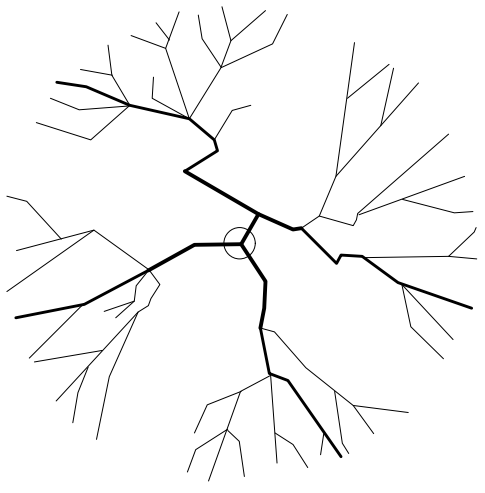
TOILETTES FILLES
15,16m²

HALL
19,78m²

CLASSE 1
56,00m²

CLASSE 2
57,16m²





SURFACE TOTALE
TOITURES
407,27m²

